

2950 Colorful Avenue
Unit 102
Longmont, CO

35,028 SF
24' clear warehouse

Warehouse for Lease!

- Excellent loading and shipping
- 24' clear warehouse throughout
- 5 dock-high overhead doors
- Fully Sprinkled
- Additional office and lab space
- Abundant parking
- Beautiful views of the Rockies
- Amenities include locker room, bike racks, and volleyball court
- Building signage available
- Pivotal location 5 minutes east of Longmont provides easy access to Longmont, Boulder, and Denver
- Adjacent to Smucker's, UC Hospital and Walmart Supercenter
- Easy access from Interstate-25, only 5 minutes by car or truck!



TEBO
PROPERTIES

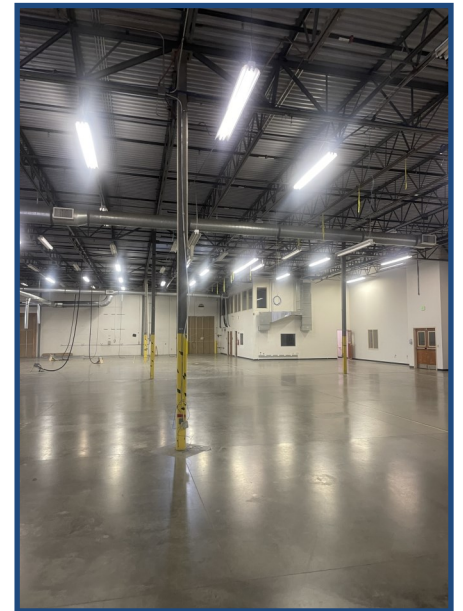
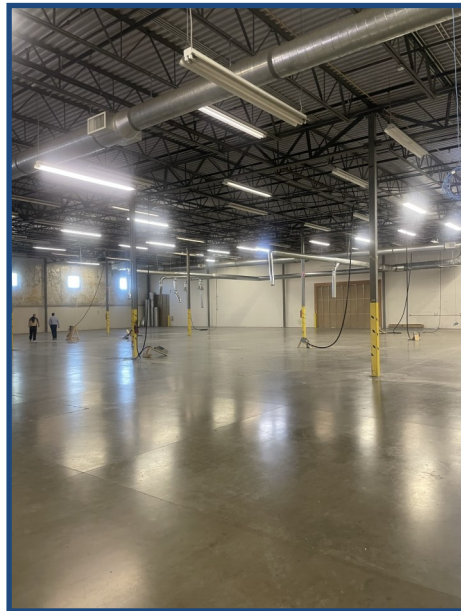
Contact us for more information:
leasing@teboproperties.com
303-447-8326
www.TEBOproperties.com

WAREHOUSE SPACE FOR LEASE

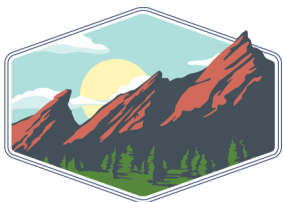


TEBO
PROPERTIES

2950 Colorful Avenue Unit 102



Unit	Square Footage	Price (NNN estimate as of 12/31/25)
102	35,028	\$9.95/SF + 4.97 (NNN)



TEBO
PROPERTIES

Contact us for more information:

leasing@teboproperties.com

303-447-8326

www.TEBOproperties.com