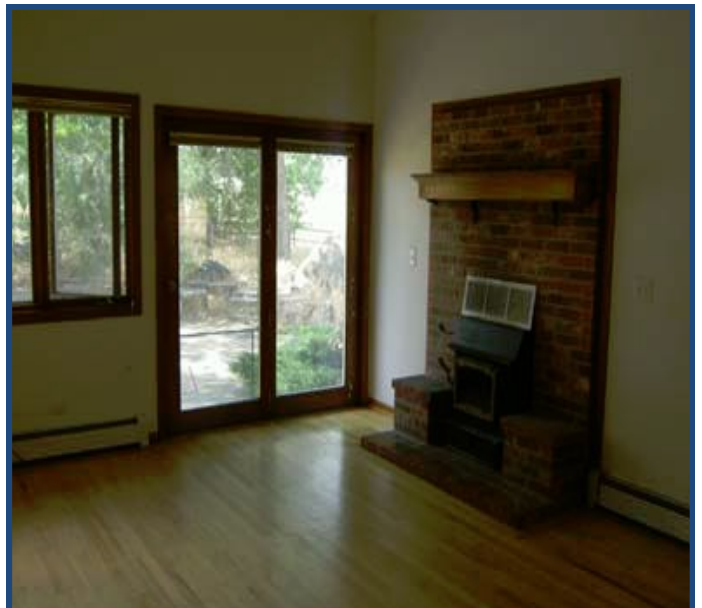
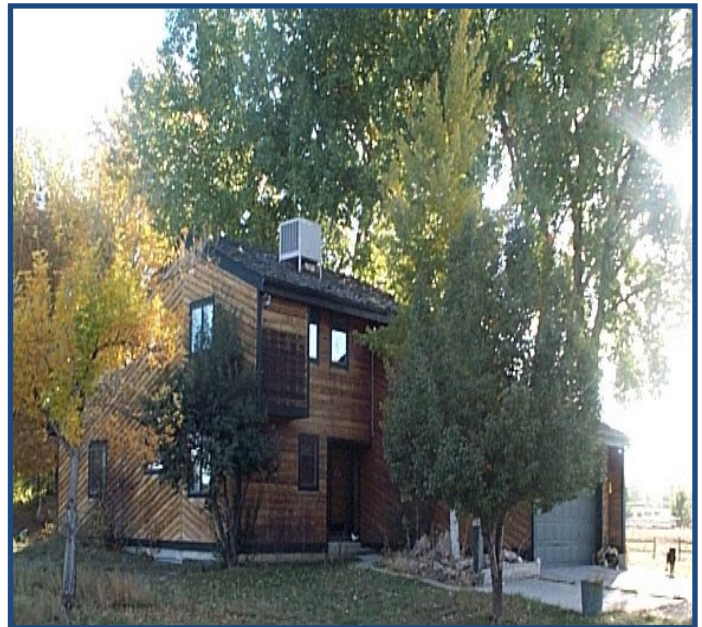


**4287 NE
County Line Rd
Erie, CO**

**2,992sf 4 Bed
4 Bath House**

House Available!

- **Spacious Residence:** Nearly 3,000 SF of living space ideal for live/work or residential use
- **Private Acreage:** House and barn situated on 1 acre just northwest of Jay Road & E. County Line Road
- **Comfortable Living:** 4 bedrooms and 4 bathrooms provide ample space for families or roommates
- **Charming Features:** Includes hardwood floors, wood-burning fireplace, and a private patio
- **Attached Garage:** Convenient 2-car garage with direct access to the home
- **Versatile Use:** Ideal for residential lease, home office, or mixed-use potential
- **Easy Access:** Quick drive to Boulder, Longmont, and surrounding areas via County Line Road
- **Quiet Setting:** Peaceful location with rural charm, yet close to urban conveniences
- **Rare Opportunity:** Hard-to-find lease with land, space, and flexibility in Erie



Contact us for more information:

leasing@teboproperties.com

303-447-8326

www.TEBOproperties.com



TEBO
PROPERTIES

HOUSE FOR LEASE

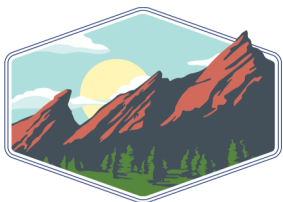


TEBO
PROPERTIES

4287 NE County Line Rd, Erie, CO



Unit	Square Footage	Price
HOUSE + 1 ACRE	2,992	\$5500.00/MO Plus Utilities Available 5/31/25



TEBO
PROPERTIES

Contact us for more information:
leasing@teboproperties.com
303-447-8326
www.TEBOproperties.com