

1633 28th Street
Boulder, CO

944 Square Feet

Retail Space Available!

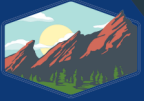
- **Prime Retail Location:** Situated on 28th Street in Boulder with excellent visibility and accessibility
- **Ample Parking:** Convenient onsite parking for customers and employees
- **High-Impact Signage:** Great exposure on a high-traffic corridor
- **Attractive Storefront:** Large windows for natural light and product displays
- **Versatile Layout:** Flexible space suitable for a variety of retail uses
- **Strong Surrounding Retail:** Close to national and local retailers, driving foot traffic
- **Easy Access:** Quick connections to major roads, public transit, and bike paths
- **Strong Demographics:** Located in a thriving market with a large customer base



TEBO
PROPERTIES

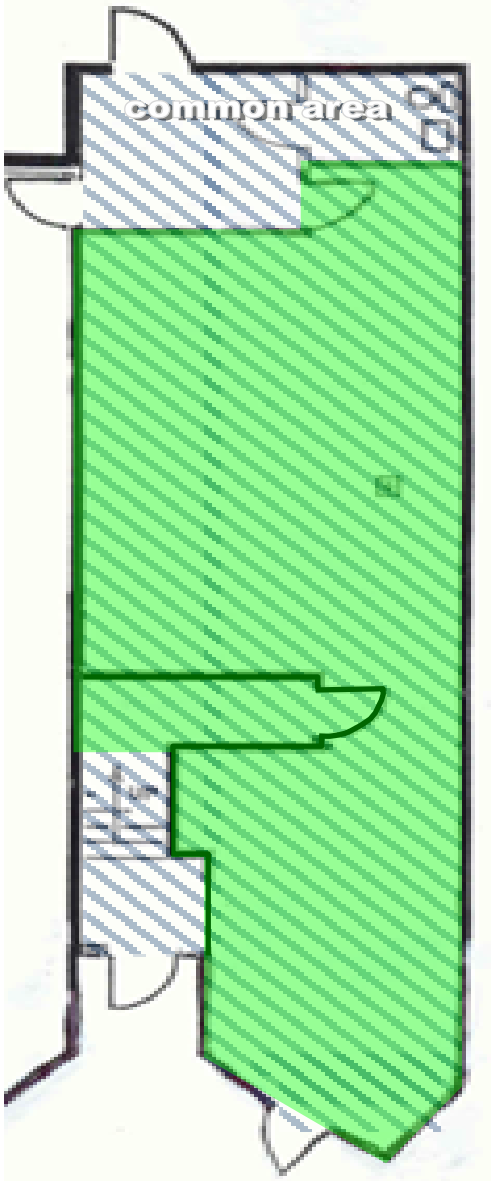
Contact us for more information:
leasing@teboproperties.com
303-447-8326
www.TEBOproperties.com

RETAIL SPACE FOR LEASE



TEBO
PROPERTIES

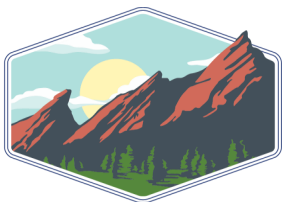
1633 28th Street, Boulder, CO



Unit	Square Footage	Price <i>*All NNN are as of 12/31/2024</i>
1633	944	\$32.50/SF + \$13.89 (NNN)* = \$3,649.35/MO



 - Available for Lease



TEBO
PROPERTIES

Contact us for more information:
leasing@teboproperties.com
303-447-8326
www.TEBOproperties.com