

**1629 28th Street
Boulder, CO**

**1,140
SQUARE FEET**

Restaurant Space Available!

- **Prime Retail Location** – Situated on 28th Street in Boulder with excellent visibility and accessibility
- **Ample Parking** – Convenient on-site parking for customers and employees
- **High-Impact Signage** – Great exposure on a high-traffic corridor
- **Attractive Storefront** – Large windows for natural light and product displays
- **Versatile Layout** – Flexible space suitable for a variety of retail uses
- **Strong Surrounding Retail** – Close to national and local retailers, driving foot traffic
- **Easy Access** – Quick connections to major roads, public transit, and bike paths
- **Strong Demographics** – Located in a thriving market with a large customer base



TEBO
PROPERTIES

Contact us for more information:
leasing@teboproperties.com
303-447-8326
www.TEBOproperties.com

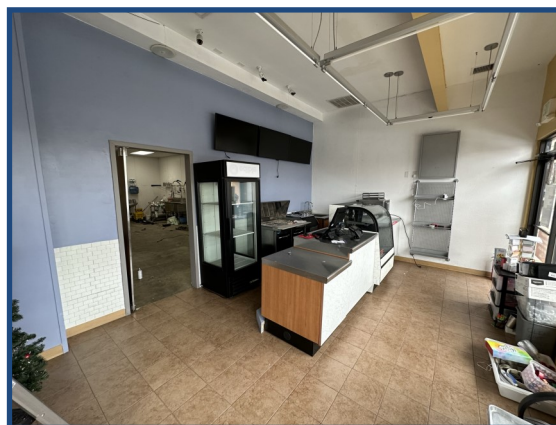
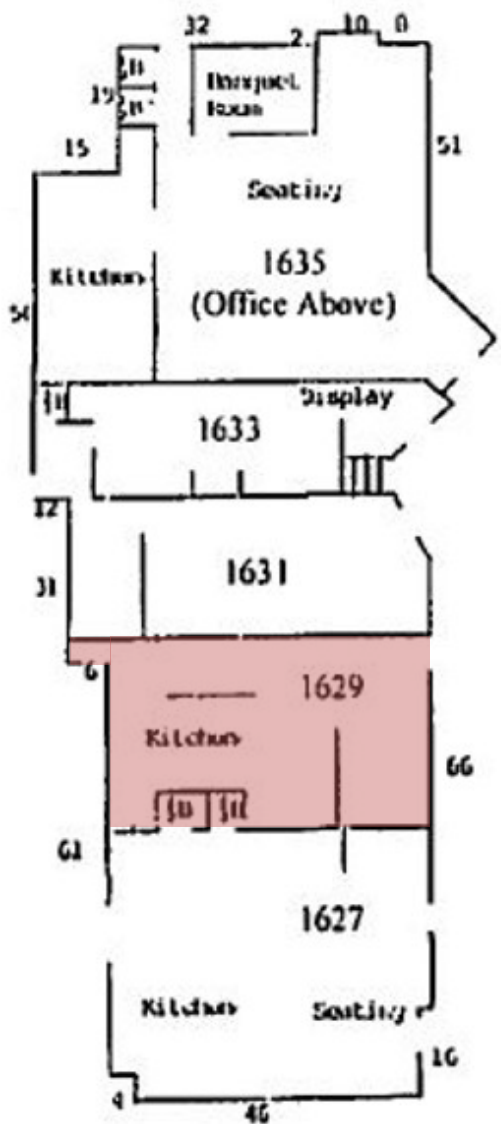
RESTAURANT SPACE FOR LEASE

1629 28th Street, Boulder, CO

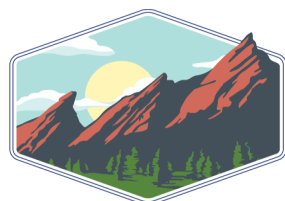


TEBO
PROPERTIES

- Available for Lease



Unit	Square Feet	Price
1629	1,140	\$35.00/SF + \$14.79/SF (NNN) = \$4,730.05 per month



TEBO
PROPERTIES

Contact us for more information:
leasing@teboproperties.com
 303-447-8326
www.TEBOproperties.com