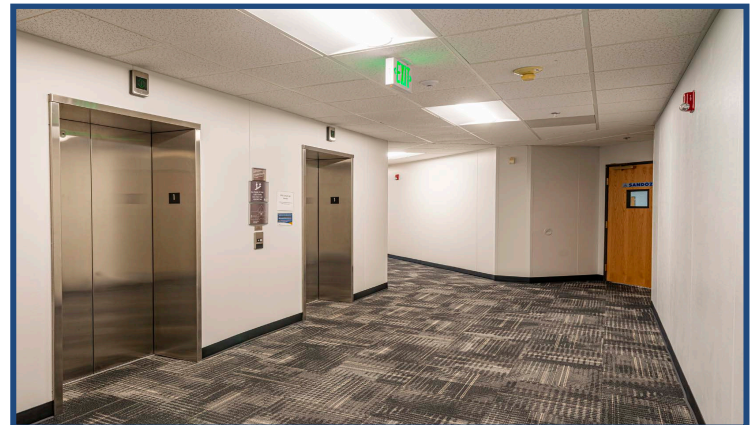


2655 W Midway
Broomfield, CO

2,672 - 93,000 SF
Over 3 Levels

Executive Office Space Available!

- Highly accessible Broomfield location
- Easy highway access to Denver, Boulder, and surrounding submarkets
- Ample, free on-site parking
- Unobstructed Front Range views, even from the first floor
- Overhead loading door
- Many common area improvements include new showers and e-bike charging stations
- Newly finished pedestrian bridge connecting the property to Flatiron Crossing Mall



TEBO
PROPERTIES

Contact us for more information:
leasing@teboproperties.com
303-447-8326
www.TEBOproperties.com

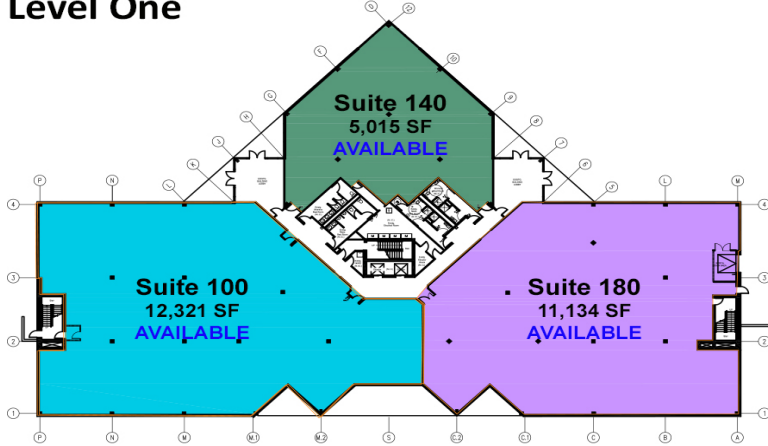
OFFICE SPACE FOR LEASE



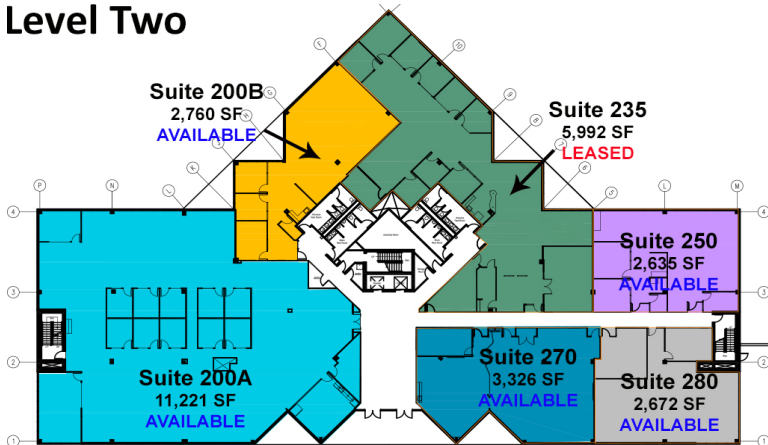
TEBO
PROPERTIES

2655 W Midway, Broomfield, CO

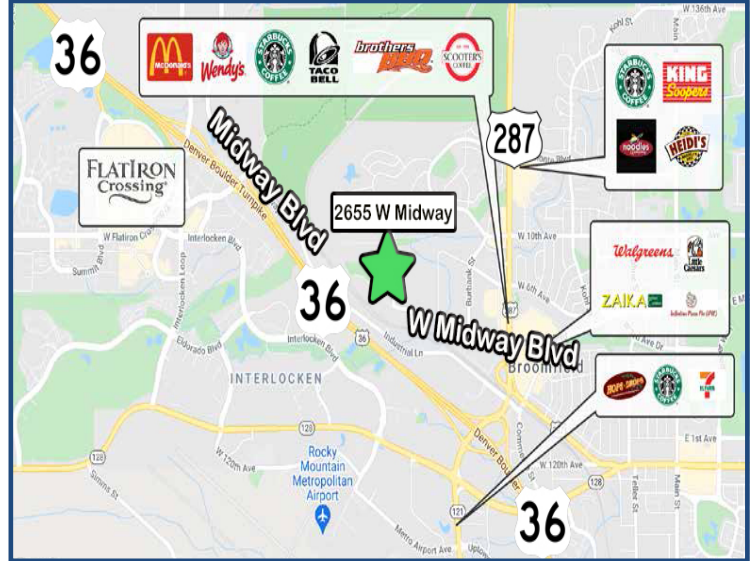
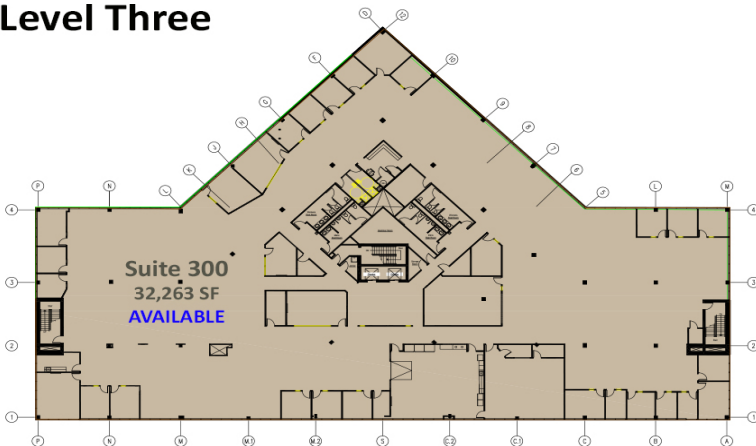
Level One



Level Two



Level Three



Price Starting At
\$20.00/SF
Full Service Gross



TEBO
PROPERTIES

Contact us for more information:
leasing@teboproperties.com
303-447-8326
www.TEBOproperties.com