

3265 28th Street  
Boulder, CO

1,657 Square Feet

## Retail/Restaurant Space Available!

- Formerly a Dairy Queen
- Space includes a grease trap, hood, and walk-in cooler
- Highly visible location on 28th Street with lots of traffic
- Plenty of onsite parking
- Easy access on 28th Street
- Building signage available.



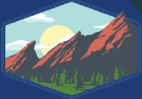
**TEBO**  
PROPERTIES

Contact us for more information:

[leasing@teboproperties.com](mailto:leasing@teboproperties.com)

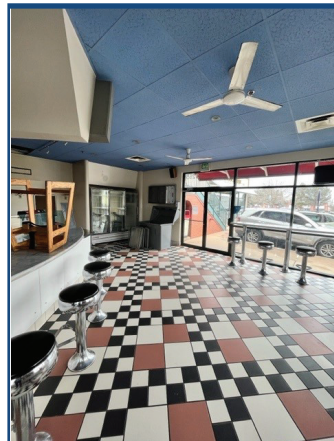
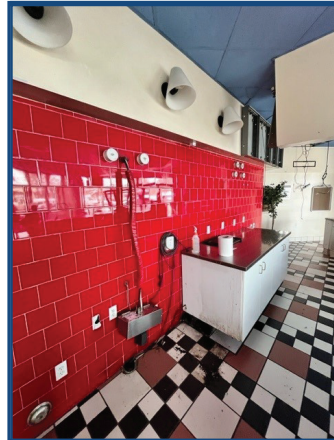
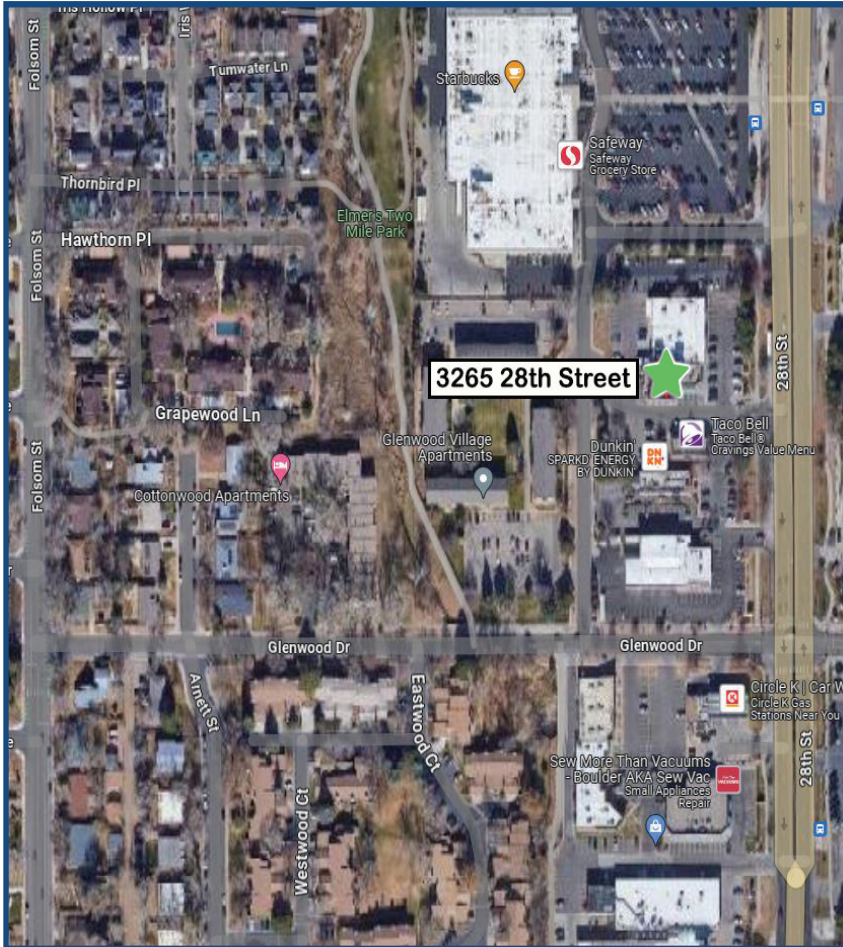
303-447-8326

[www.TEBOproperties.com](http://www.TEBOproperties.com)

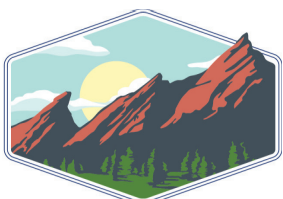


**TEBO**  
PROPERTIES

**3265 28th Street, Boulder, CO**



Unit	Square Footage	Price
3265	1,657	\$35.00/SF + \$12.80 (NNN) = \$6,600.38/MO



**TEBO**  
PROPERTIES

Contact us for more information:  
[leasing@teboproperties.com](mailto:leasing@teboproperties.com)  
 303-447-8326  
[www.TEBOproperties.com](http://www.TEBOproperties.com)