

1920 Arapahoe Ave.  
Boulder, CO

1,736 Square Feet

## Office or Retail Space Available!

- Excellent location on Arapahoe Avenue
- 0.18 acre lot
- Recently remodeled space features beautiful exposed brick walls & includes a kitchen, bathroom, and shower
- Large windows provide ample natural light
- Vaulted ceilings on 2nd floor
- 30' of frontage on Arapahoe Avenue
- Walking distance to Downtown Boulder
- 8+ parking spaces in the rear with additional street parking available
- Signage available



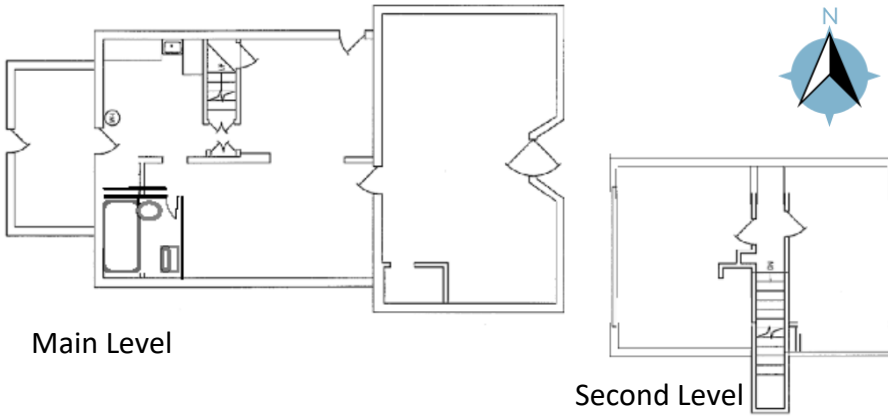
**TEBO**  
PROPERTIES

Contact us for more information:  
[leasing@teboproperties.com](mailto:leasing@teboproperties.com)  
303-447-8326  
[www.TEBOproperties.com](http://www.TEBOproperties.com)



**TEBO**  
PROPERTIES

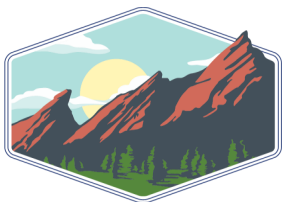
# 1920 Arapahoe Ave., Boulder, CO



Main Level

Second Level

Unit	Square Footage	Price
1920	1,736	\$25.00/SF + \$12.80 (NNN) = \$5,468.40/Month



**TEBO**  
PROPERTIES

Contact us for more information:  
[leasing@teboproperties.com](mailto:leasing@teboproperties.com)  
 303-447-8326  
[www.TEBOproperties.com](http://www.TEBOproperties.com)