

**2690 28th Street
Unit E
Boulder, CO**

**4,100sf + 209sf
Outside Patio Area**

Retail Space Available!

- Zoned CB-E – Variety of Uses
- Very Busy Shopping Center
- Monument Signage on 28th Street
- Store Front Signage Available
- Convenient 28th Street Access
- Parking on all sides of the Complex and Street Parking along Bluff Street
- South Facing Windows
- 10ft Overhead Door that Opens to 35ft Deep Open Area
- Lobby Area
- Private Office



TEBO
PROPERTIES

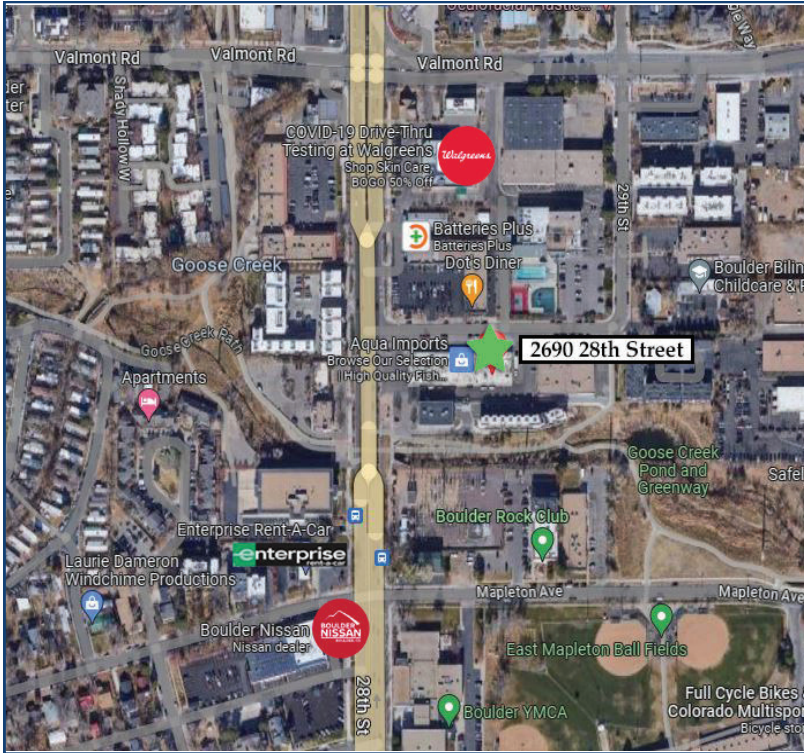
Contact us for more information:
leasing@teboproperties.com
303-447-8326
www.TEBOproperties.com

RETAIL SPACE FOR LEASE

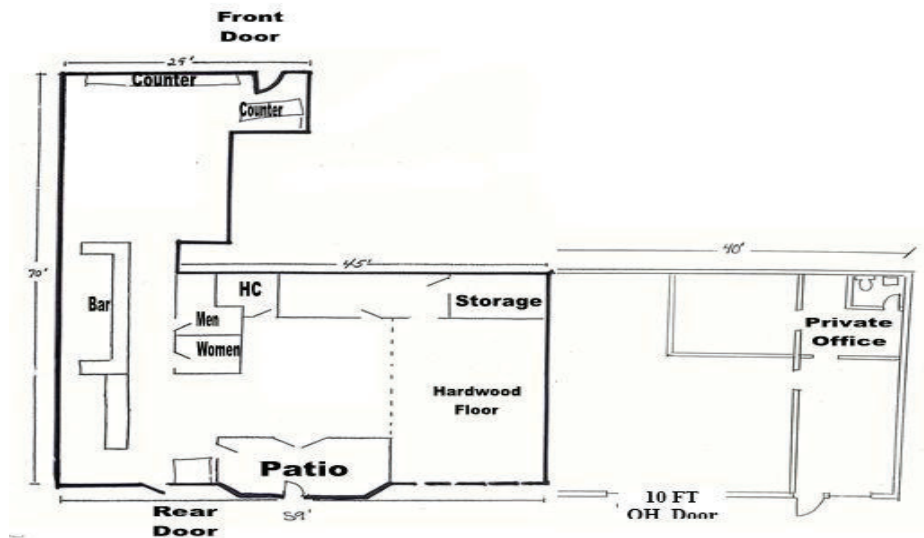


TEBO
PROPERTIES

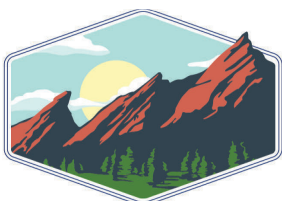
2690 28th Street, Unit E, Boulder



Unit	Square Footage	Price
Unit E	4,100sf + 209sf Outside Patio	\$23.00/SF + \$9.95 (NNN)



Unit E - Floor Plan



TEBO
PROPERTIES

Contact us for more information:
leasing@teboproperties.com
 303-447-8326
www.TEBOproperties.com