

**4730 Table Mesa Dr.**  
H-200, H-300, I-200C, J-200  
Boulder, CO

**300 - 1,800 Square  
Feet**

## Office Spaces For Lease!

- Some with private offices, conference room, and reception area
- Ideal spaces for start ups, tech groups, or general office users
- Private restrooms in some suites
- Restaurants and retail shops close by
- Property offers quick access to US HWY 36 & Table Mesa Park-n-Ride
- Great for employees commuting from Denver or south of Boulder County
- Beautiful views of the Flatirons



**TEBO**  
PROPERTIES

Contact us for more information:  
[leasing@teboproperties.com](mailto:leasing@teboproperties.com)  
303-447-8326  
[www.TEBOproperties.com](http://www.TEBOproperties.com)

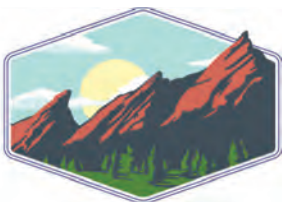
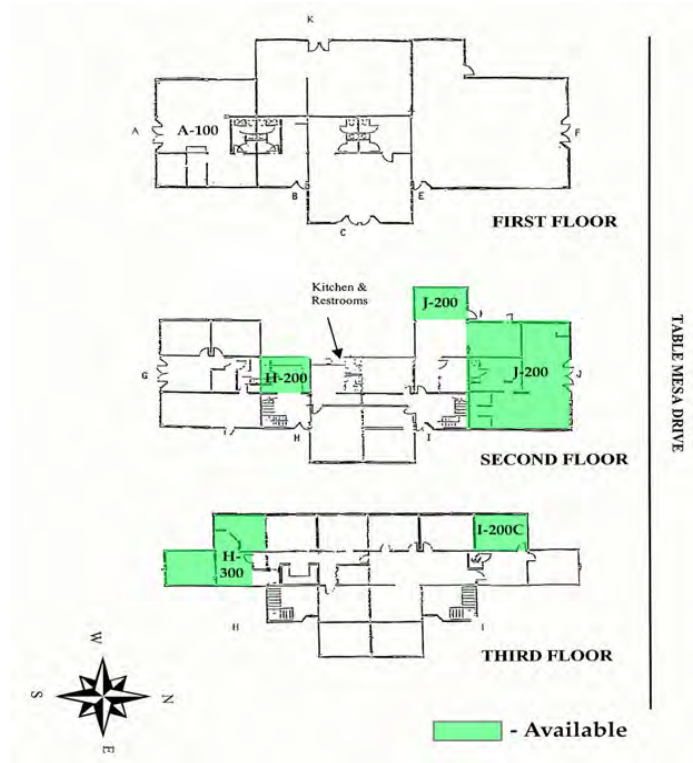
# OFFICE SPACE FOR LEASE



**TEBO**  
PROPERTIES

## 4730 Table Mesa Drive, Boulder

Unit	Square Feet	Price
H-200	460	\$17.50/SF + \$9.23 (NNN) = \$1,024.65/MO
H-300	780	\$17.50/SF + \$9.23 (NNN) = \$1,737.45/MO
I-200C	300	\$17.50/SF + \$9.23 (NNN) = \$668.25/MO
J-200	1,800	\$17.50/SF + \$9.23 (NNN) = \$4,009.50/MO



**TEBO**  
PROPERTIES

Contact us for more information:  
[leasing@teboproperties.com](mailto:leasing@teboproperties.com)  
 303-447-8326  
[www.TEBOproperties.com](http://www.TEBOproperties.com)