

# 4720 Table Mesa Drive

Suite A210, A 100 and G100

Boulder, CO

**530—1,420 SF**

## **Creative Office Space For Lease!**

### **Accessible South Boulder Location:**

Positioned at 4720 Table Mesa with quick access to US Highway 36 and Table Mesa Park-n-Ride

### **Creative Office Environment:**

Suites ideal for startups, tech teams, or general office users seeking a new workspace

### **Welcoming & Private:**

Features private restrooms for tenant convenience and comfort

### **Ample Parking Advantage:**

Generous parking lots to the north and south provide easy, free parking for employees and visitors

### **Commute-Friendly:**

Perfectly located for staff commuting from Denver or anywhere south of Boulder County

### **Surrounded by Amenities:**

Steps from nearby restaurants, coffee shops, and retail stores for dining and errands

### **Ready for Immediate Use:**

A rare opportunity to secure affordable, flexible office space in desirable South



**TEBO**  
PROPERTIES

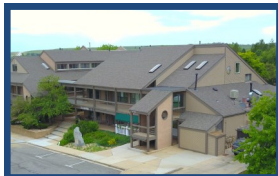
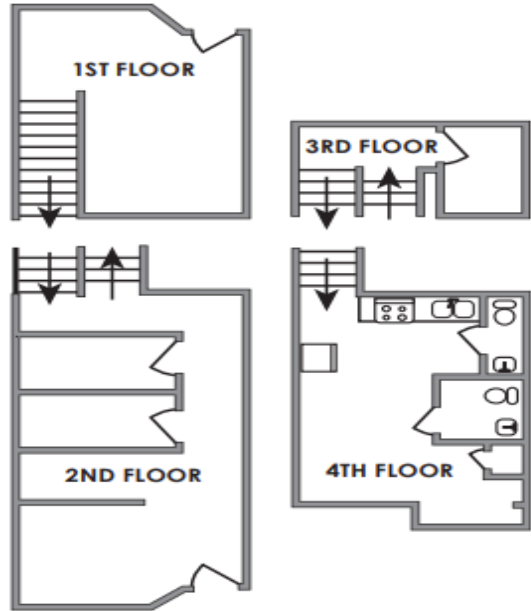
Contact us for more information:  
303-447-8326  
[leasing@teboproperties.com](mailto:leasing@teboproperties.com)



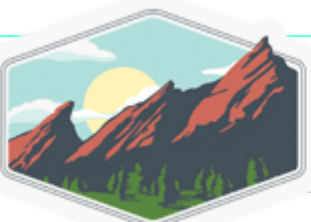
**TEBO**  
PROPERTIES

**4720 Table Mesa Drive, Boulder, CO**

**FLOOR PLAN - OFFICE - G-100**



Unit	Square Footage	Price (NNN as of 2025)
A210	530	\$1,250.00 per month + utilities
A100	668	\$1,400.00 per month + utilities
A100+ A210	1,198	\$2,500 per month + utilities
G100	1,420	\$14.75/SF + \$8.84 (NNN) = \$2,791.48/MO



**TEBO**  
PROPERTIES

leasing@teboproperties.com  
303-447-8326 teboproperties.com