

4720 Table Mesa Dr.
Unit C-100
Boulder, CO

2,311 Square Feet

Turnkey Restaurant Space For Lease!

- Equipment and furniture available
- Space includes a hood
- Large kitchen
- Large open seating rooms
- Mezzanine offers additional seating
- Two patio spaces for customers to enjoy the Colorado weather
- Great parking with large lots to the north and south of the building
- Property offers quick access to US HWY 36 & Table Mesa Park-n-Ride
- Great for employees commuting from Denver or south of Boulder County
- Beautiful views of the Flatirons



TEBO
PROPERTIES

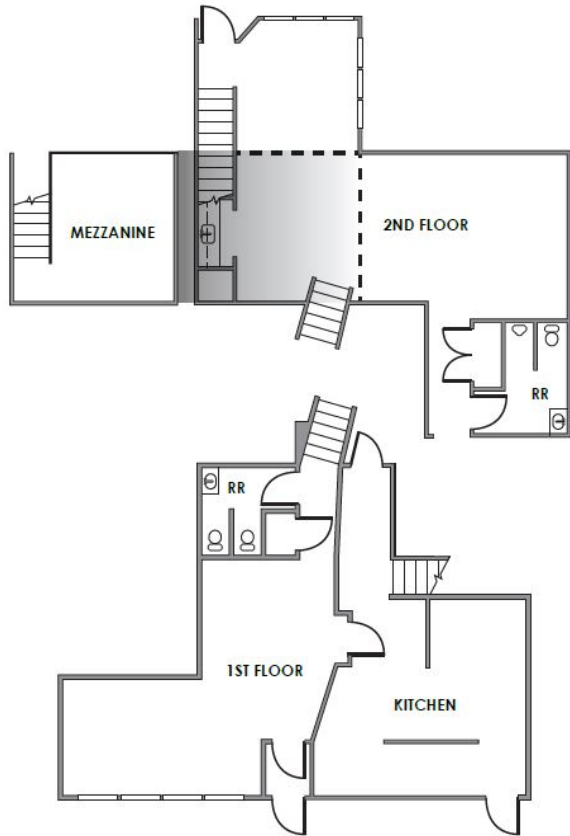
Contact us for more information:
leasing@teboproperties.com
303-447-8326
www.TEBOproperties.com

RESTAURANT SPACE FOR LEASE

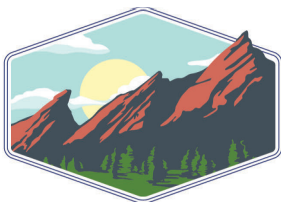
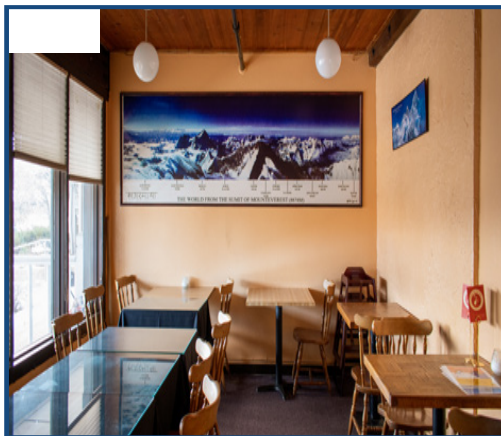


TEBO
PROPERTIES

4720 Table Mesa Dr, Unit C-100



| Unit | Square Feet | Price |
|-------|-------------|---|
| C-100 | 2,311 | \$19.50/SF + \$9.48 (NNN) = \$5,581.07/MO |



TEBO
PROPERTIES

Contact us for more information:
leasing@teboproperties.com
303-447-8326
www.TEBOproperties.com