

4720 Table Mesa Dr.
B-100, E-200, F-100
Boulder, CO

833 - 1,331 Square Feet

Office Space Available!

- [Creative Offices](#) – fun space ideal for startups, tech groups, or general office users
- Private restrooms
- Great parking with large lots to the north and south of the building
- Restaurants and retail shops close by
- Property offers quick access to US HWY 36 & Table Mesa Park-n-Ride
- Great for employees commuting from Denver or south of Boulder County
- Beautiful views of the Flatirons



TEBO
PROPERTIES

Contact us for more information:

leasing@teboproperties.com

303-447-8326

www.TEBOproperties.com

OFFICE SPACE FOR LEASE

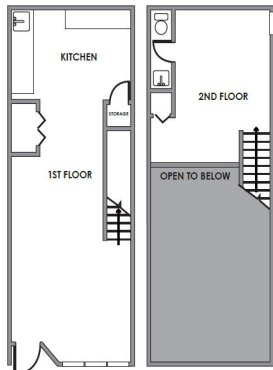


TEBO
PROPERTIES

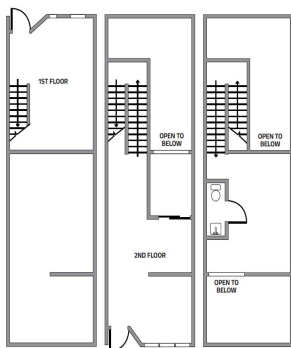
4720 Table Mesa Dr, Boulder, CO



Suite E-200

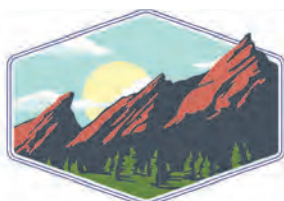


Suite F-100



Unit	Square Feet	Price
B-100	875	\$16.50/SF + \$9.48 (NNN) = \$1,894.38/MO
E-200*	833	\$16.50/SF + \$9.48 (NNN) = \$1,803.45/MO
F-100	1,331	\$14.50/SF + \$9.48 (NNN) = \$2,659.78/MO

***E-200 is on Second Level**



TEBO
PROPERTIES

Contact us for more information:
leasing@teboproperties.com
 303-447-8326
www.TEBOproperties.com