

400 Centennial Pkwy
Louisville, CO

5,054—41,733 Square Feet

Office Building Available!

- Multiple offices and open work space throughout
- Kitchenettes in-suites
- Large lobby and reception area
- Ample natural light
- Outdoor patio with picnic tables
- Building and monument signage available
- Close to numerous retail and restaurants
- High end finishes throughout
- Easy access to US-36 Denver and Boulder
- Former tenant was Uber
- Opportunity to lease the entire building



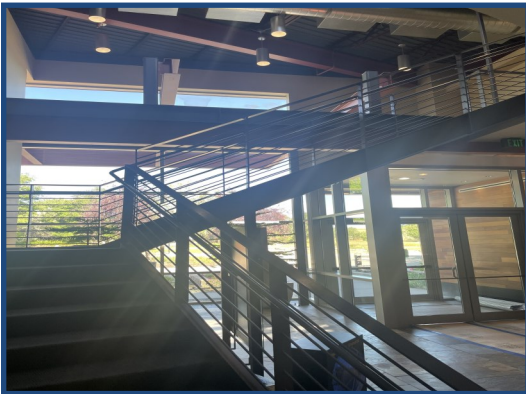
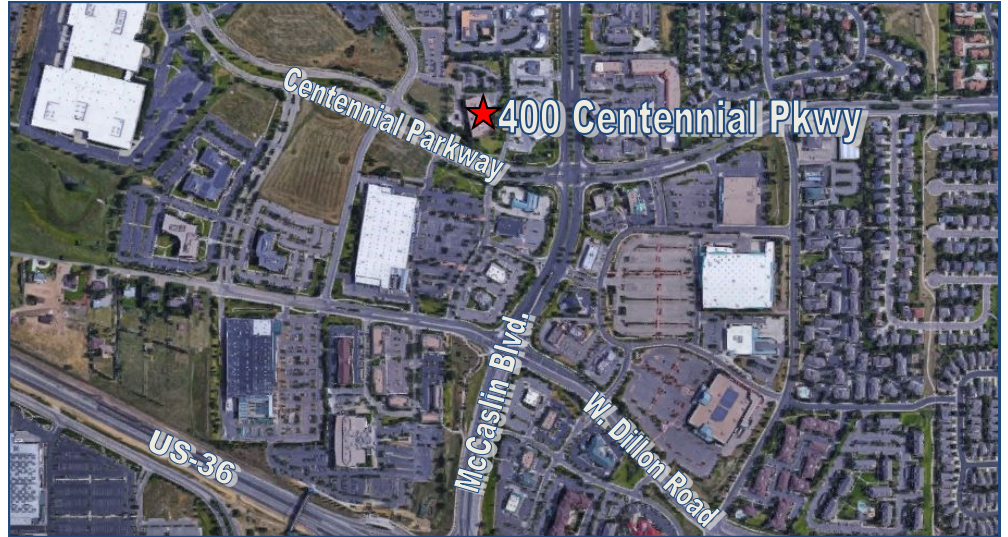
TEBO
PROPERTIES

Contact us for more information:
leasing@teboproperties.com
303-447-8326
www.TEBOproperties.com



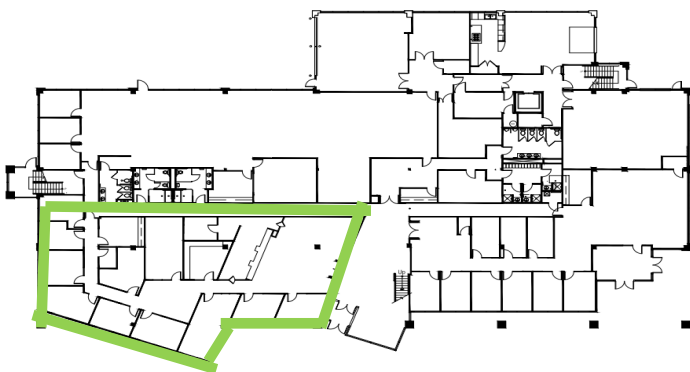
TEBO
PROPERTIES

400 Centennial Pkwy, Louisville, CO



Unit	Square Footage	Price
Full Building 100	5,054—41,733	CALL FOR RATE!

First Floor



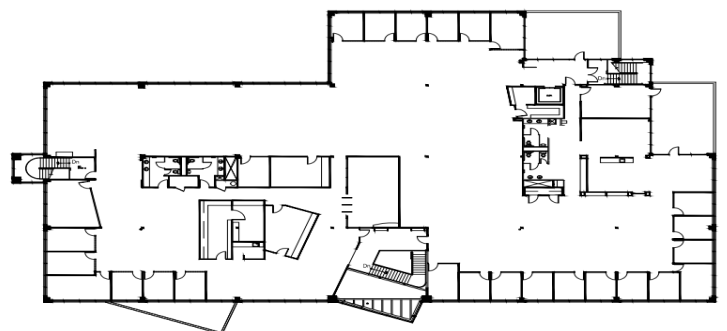
1 AS-BUILT PLAN

SCALE NOT TO SCALE



PLAN NORTH

Second Floor

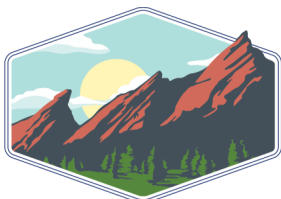


1 AS-BUILT PLAN

SCALE NOT TO SCALE



PLAN NORTH



TEBO
PROPERTIES

Contact us for more information:
leasing@teboproperties.com
303-447-8326