

2880 Diagonal Hwy  
Boulder, CO

10,616 Square Feet

## Prime Office Space Available!

- Freestanding building, previously a restaurant, which will be extensively renovated
- Open floorplan with a break bar
- High cathedral ceilings
- 2 acre lot size
- Abundant customer parking
- Located by the Iris Ave and 28th St intersection in North Boulder
- Great visibility from Hwy 119
- Easy access to Longmont & Denver
- Access from 28th St., 30th St., or Hwy-119



**TEBO**  
PROPERTIES

[leasing@teboproperties.com](mailto:leasing@teboproperties.com)

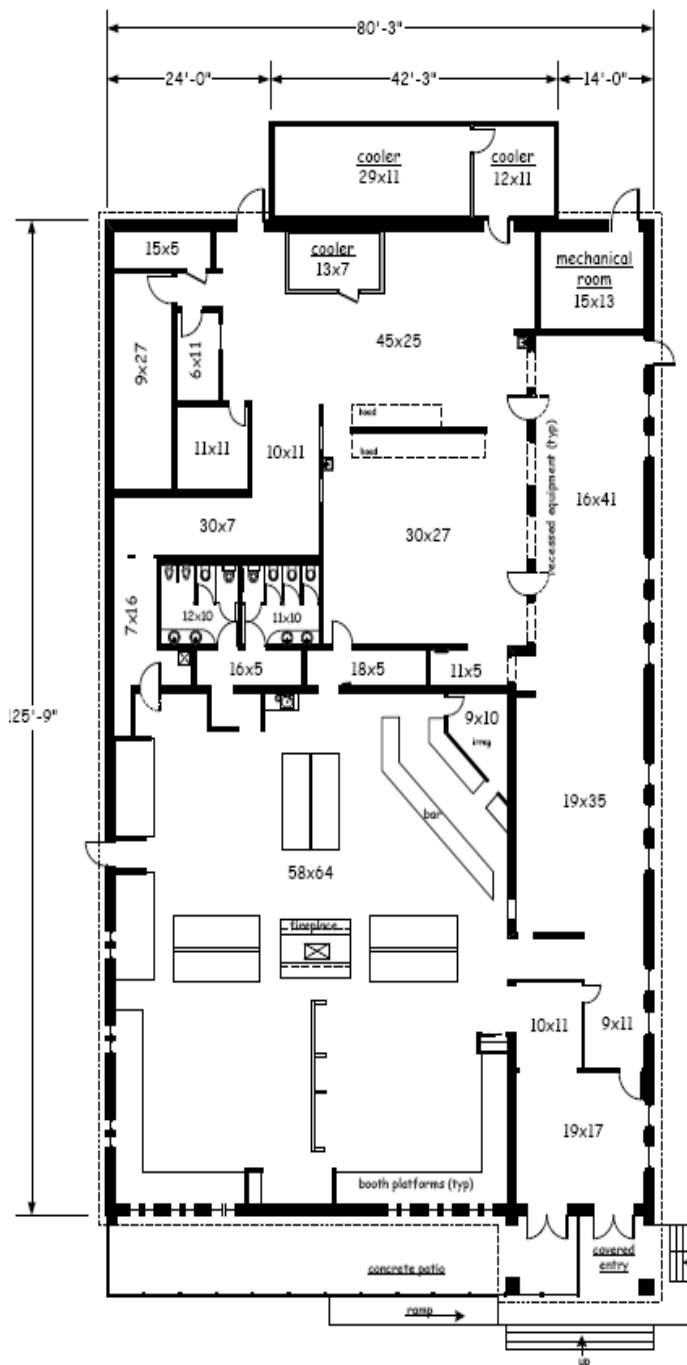
303-447-8326 [teboproperties.com](http://teboproperties.com)

# OFFICE SPACE FOR LEASE

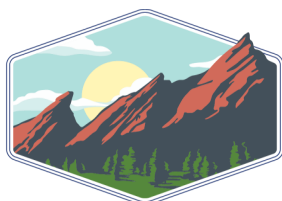


**TEBO**  
PROPERTIES

## 2880 Diagonal Hwy, Boulder, CO



| Square Footage | Lot Size | Price                |
|----------------|----------|----------------------|
| 10,616         | 2 acres  | CALL NOW FOR A RATE! |



**TEBO**  
PROPERTIES

[leasing@teboproperties.com](mailto:leasing@teboproperties.com)

303-447-8326 [teboproperties.com](http://teboproperties.com)