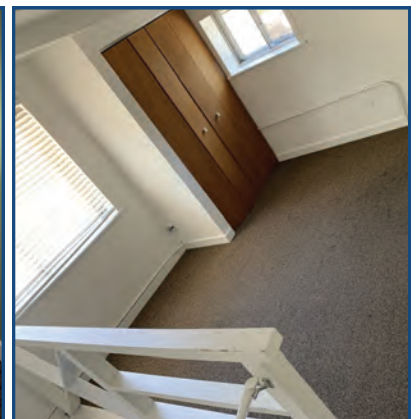
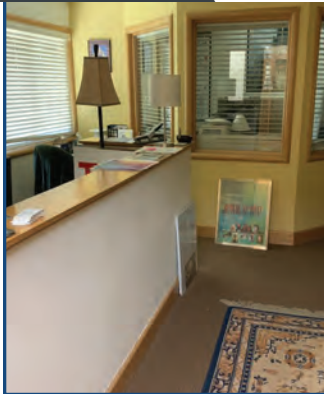


**2338 Broadway  
Boulder, CO**

**1,600 Square Feet**

## Office Space Available!

- Great location on busy street
- Broadway entrance & side entrance
- Private restrooms in-suites
- Shared patio
- Reception counter
- Conference room
- Fireplace
- Great spaces for small companies of 2-18 employees
- Only 3 blocks from Pearl Street Mall
- Walking distance to numerous amenities
- Parking available on east side of building
- Temp controlled spaces
- Signage available



**TEBO**  
PROPERTIES

Contact us for more information:

[leasing@teboproperties.com](mailto:leasing@teboproperties.com)

303-447-8326

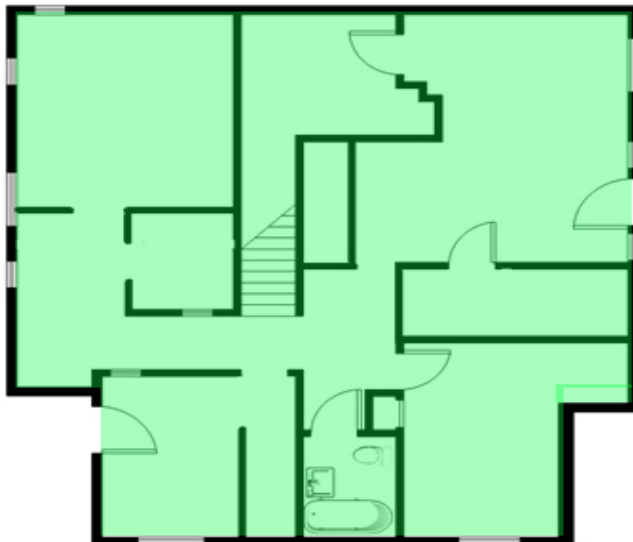
[www.TEBOproperties.com](http://www.TEBOproperties.com)



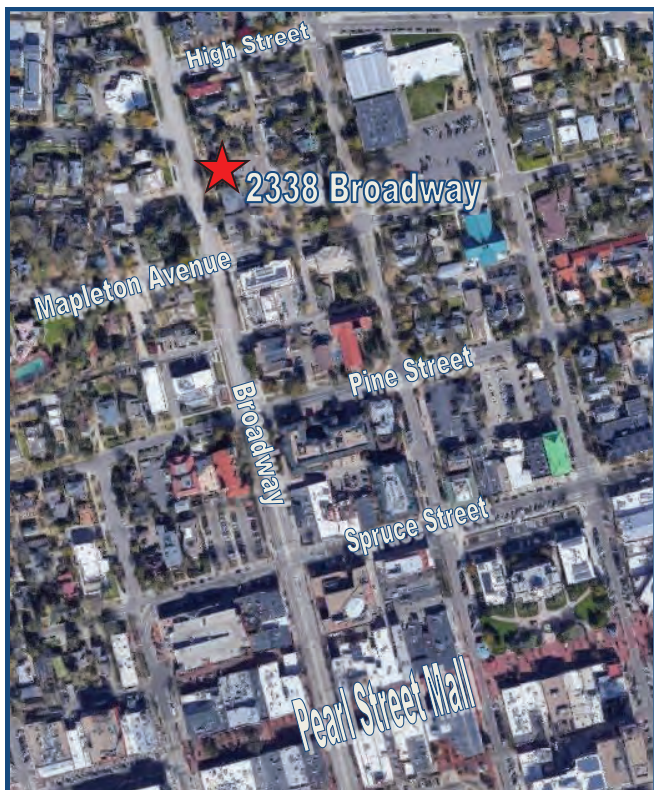
**TEBO**  
PROPERTIES

# 2338 Broadway, Boulder, CO

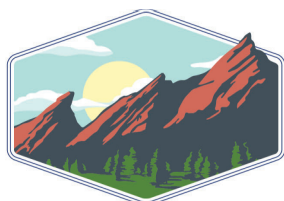
## 2338 -'Lower Level - Unit D



 - Available



Unit	Square Footage	Price (Includes Parking)
Unit B Lower Level	1,600	\$2,500.00/MO + Utilities



**TEBO**  
PROPERTIES

Contact us for more information:  
[leasing@teboproperties.com](mailto:leasing@teboproperties.com)  
303-447-8326  
[www.TEBOproperties.com](http://www.TEBOproperties.com)