

1909 Broadway Street  
Lower Level  
Boulder, CO

1,808 Square Feet

## Retail Space Available!

- Prime corner location in busy Downtown Boulder West End District
- Great exposure to both vehicle and pedestrian traffic
- Open floorplan with office
- Elevator access into unit
- Kitchenette
- Restroom in-suite
- Parking available
- Finished rooftop with amazing Boulder views
- Just one block from the Pearl Street Mall
- Signage available



**TEBO**  
PROPERTIES

Contact us for more information:

[leasing@teboproperties.com](mailto:leasing@teboproperties.com)

303-447-8326

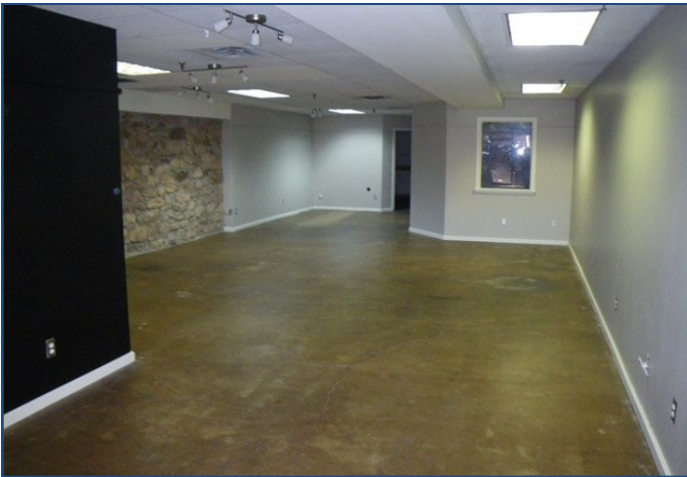
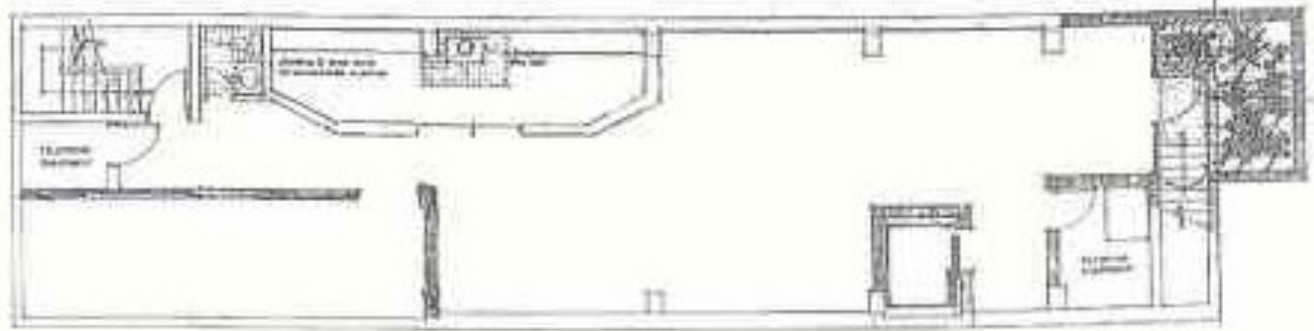
[www.TEBOproperties.com](http://www.TEBOproperties.com)

# RETAIL SPACE FOR LEASE

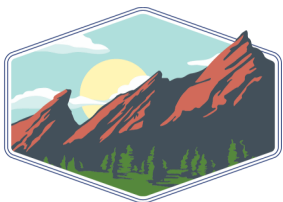
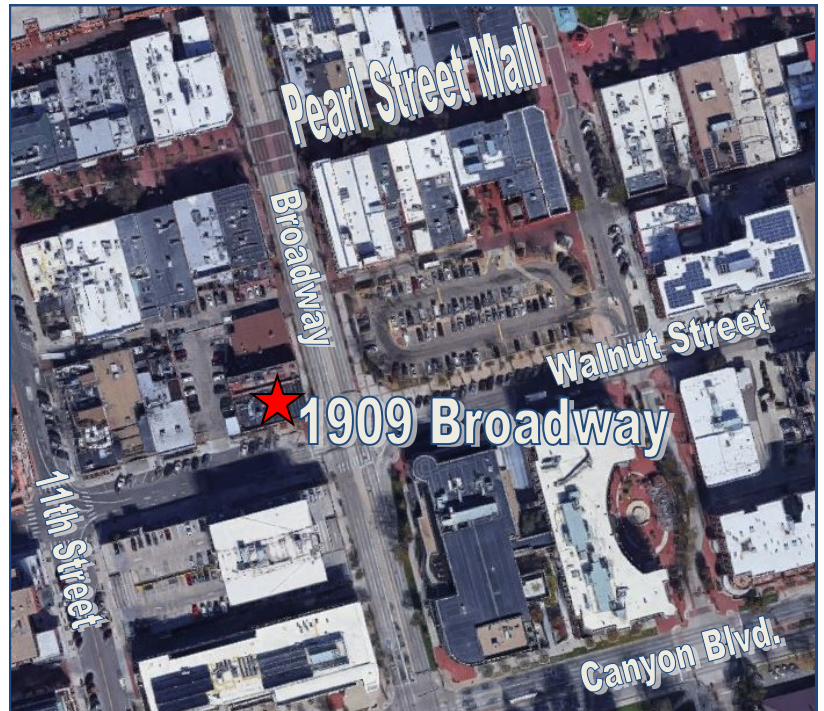


**TEBO**  
PROPERTIES

## 1909 Broadway Street, Lower Level



Unit	Square Footage	Price
Lower Level	1,808	\$19.50/SF + \$10.76 (NNN) = \$4,559.17/MO



**TEBO**  
PROPERTIES

Contact us for more information:  
[leasing@teboproperties.com](mailto:leasing@teboproperties.com)  
303-447-8326  
[www.TEBOproperties.com](http://www.TEBOproperties.com)