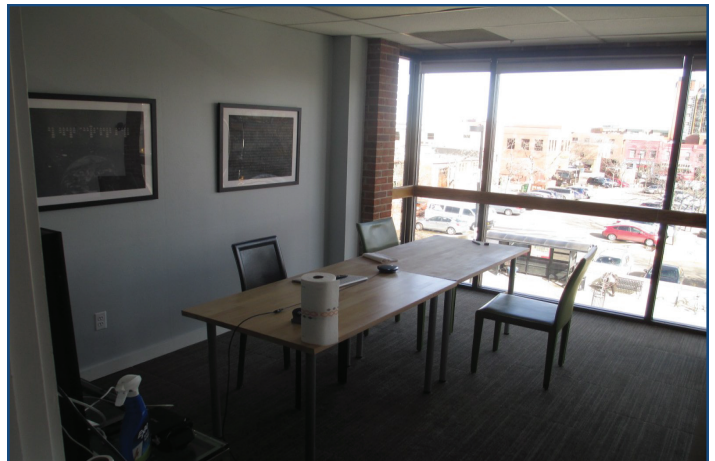


1909 Broadway
Suite 300
Boulder, CO

1,867 Square Feet

Office Space Available!

- Prime corner location in busy Downtown Boulder
- Just half a block from Pearl Street Mall
- Great exposure to both vehicle and pedestrian traffic
- Open floorplan with offices
- Kitchenette w/ dishwasher in-suite
- Glass entry provides ample natural light
- 2 restrooms in-suite
- Parking available
- Large finished rooftop patio with amazing Boulder views
- Signage available
- Visible signage opportunity
- Windows w/ Flatiron views
- Parking available
- Elevator



TEBO
PROPERTIES

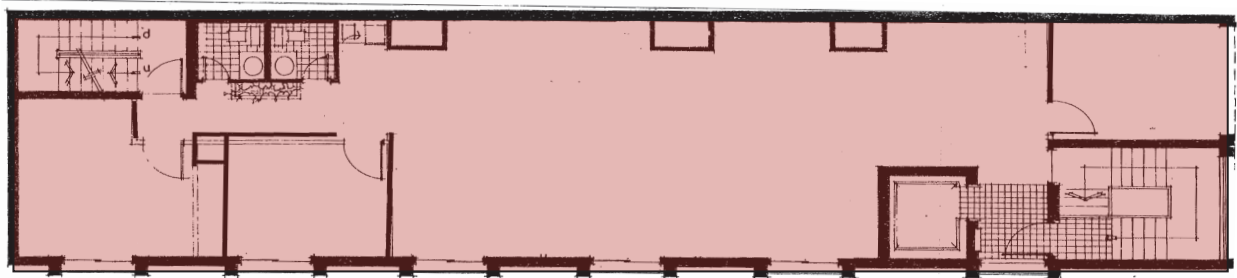
Contact us for more information:
leasing@teboproperties.com
303-447-8326
www.TEBOproperties.com

OFFICE SPACE FOR LEASE




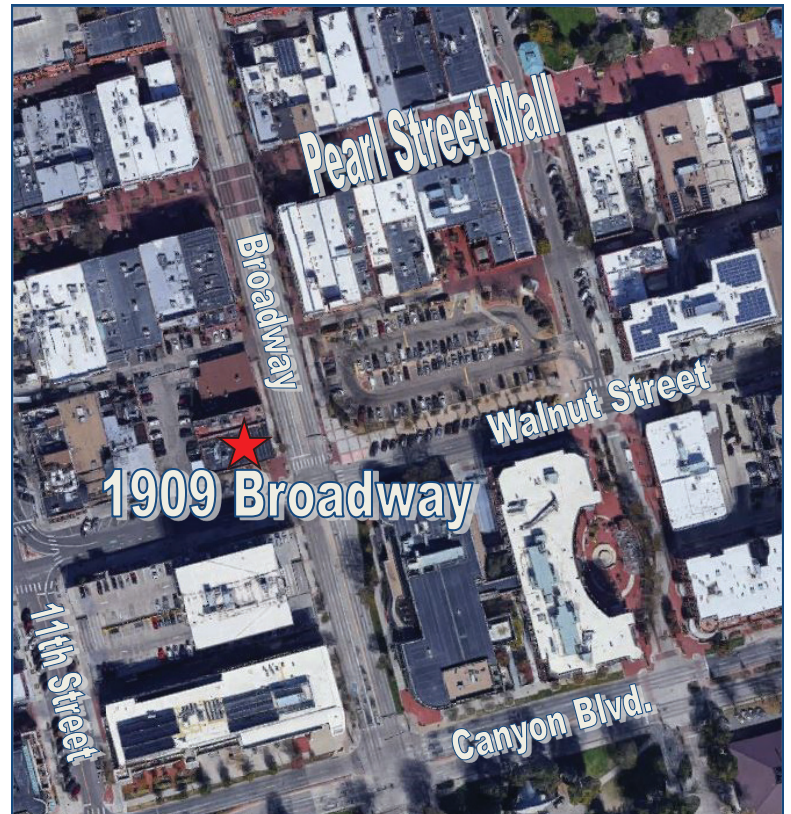
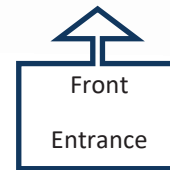
TEBO
PROPERTIES

1909 Broadway, Suite 300

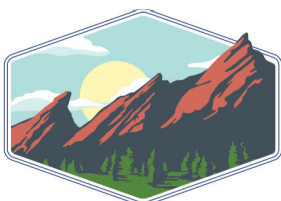


Third Level Floor Plan

 - Available for Lease



Unit	Square Footage	Price
300	1,867	\$27.50/SF + \$10.76 (NNN) = \$5,952.62/MO



TEBO
PROPERTIES

Contact us for more information:

leasing@teboproperties.com

303-447-8326

www.TEBOproperties.com