

**1900 9th Street
Suites 200, 210, and 300
Boulder, CO**

2,402 - 5,980 Square Feet

Office Space Available!

- Prime corner location in West End District (9th & Walnut)
- Class A finishes with vaulted ceilings and great natural lighting
- Walking distance to RTD bus station, restaurants, Pearl Street Mall and many other amenities
- Exterior balconies featuring amazing views of the Flatirons
- Parking available
- Common area showers and break room
- High end lobby with elevator
- Recently renovated



TEBO
PROPERTIES

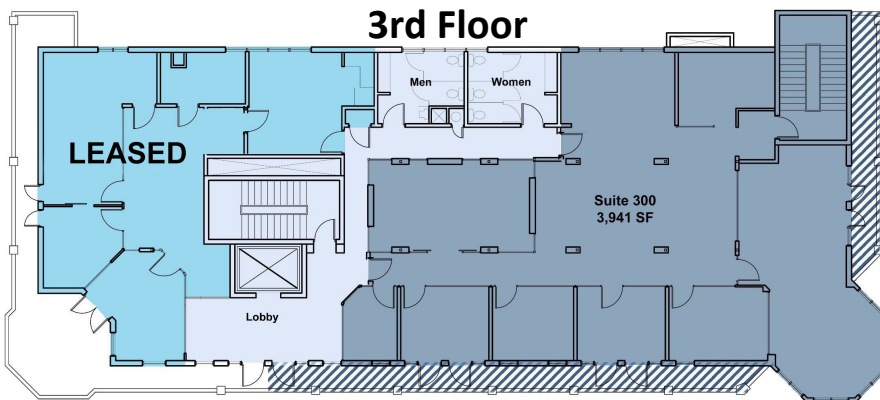
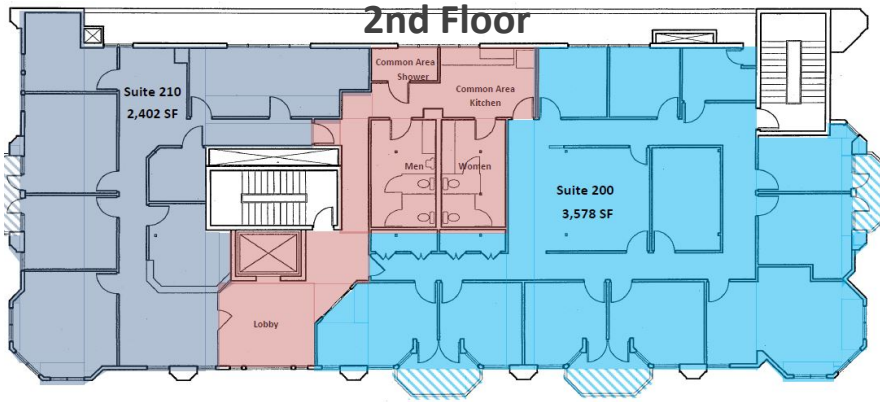
Contact us for more information:
leasing@teboproperties.com
303-447-8326
www.TEBOproperties.com

OFFICE SPACE FOR LEASE



TEBO
PROPERTIES

1900 9th Street, Boulder, CO



Unit	Square Footage	Price
200	3,578 + exterior patios	\$27.50/SF + \$21.83 (NNN) = \$15,304.90/Month
210	2,402 + exterior patios	\$35.00/SF + \$21.83 (NNN) = \$11,375.47/Month
Entire 2nd	5,980 + exterior patios	\$27.50/SF + \$21.83 (NNN) = \$24,582.78/Month
300	3,941 + exterior patios	\$29.50/SF + \$21.83 (NNN) = \$16,857.63/Month



TEBO
PROPERTIES

Contact us for more information:

leasing@teboproperties.com

303-447-8326

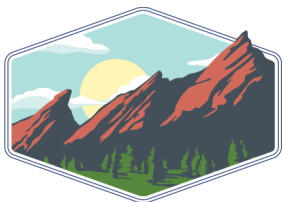
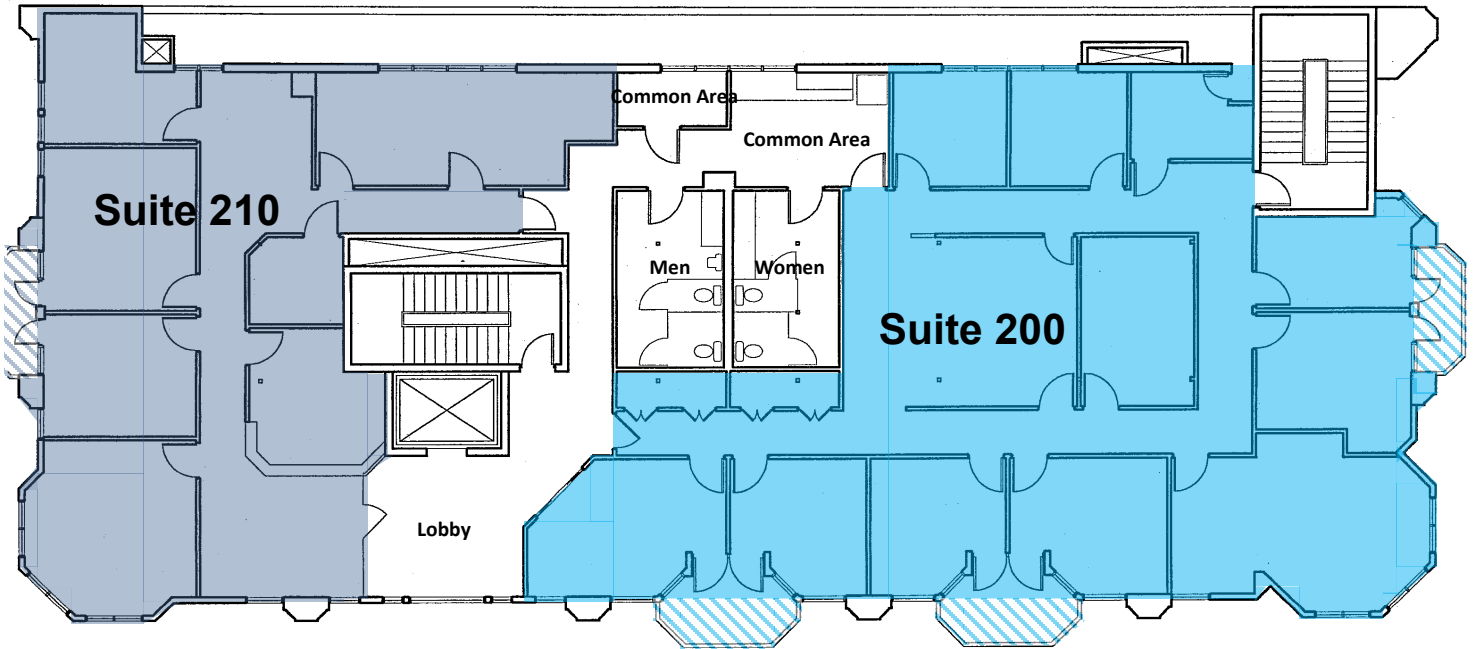
www.TEBOproperties.com

OFFICE SPACE FOR LEASE



TEBO
PROPERTIES

1900 9th Street, Boulder, CO



TEBO
PROPERTIES

Contact us for more information:
leasing@teboproperties.com
303-447-8326
www.TEBOproperties.com