

**1900 9th Street**  
**Suite 210**  
**Boulder, CO**

**2,402 Square Feet**  
**+ Exterior Patios**

## **Office Spaces Available!**

- Prime corner location in West End District (9th & Walnut)
- Class A finishes with vaulted ceilings and great natural lighting
- Walking distance to RTD bus station, restaurants, Pearl Street Mall and many other amenities
- Exterior balconies featuring amazing views of the Flatirons
- Parking available
- Common area showers and break room
- High end lobby with elevator
- Recently renovated



**TEBO**  
PROPERTIES

Contact us for more information:  
[leasing@teboproperties.com](mailto:leasing@teboproperties.com)  
303-447-8326  
[www.TEBOproperties.com](http://www.TEBOproperties.com)

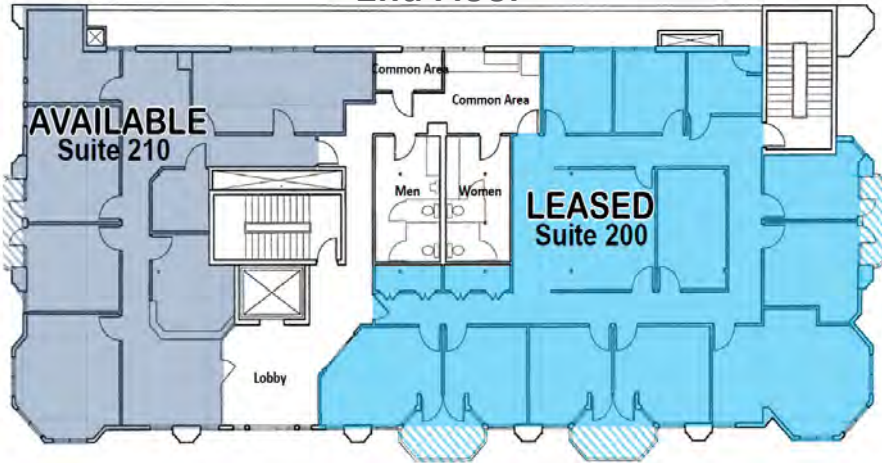
# OFFICE SPACE FOR LEASE

## 1900 9th Street, Boulder, CO

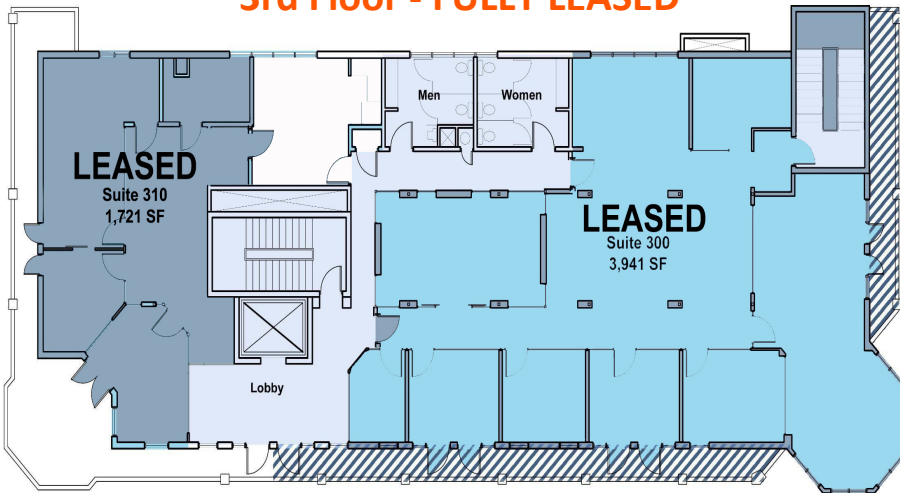


**TEBO**  
PROPERTIES

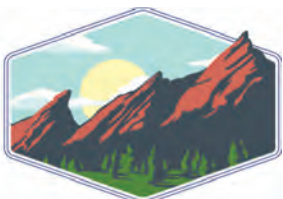
### 2nd Floor



### 3rd Floor - FULLY LEASED



Unit	Square Footage	Price
210	2,402 + exterior patio	\$27.50/SF + \$22.63 (NNN) = \$10,034.36/Month



**TEBO**  
PROPERTIES

Contact us for more information:

[leasing@teboproperties.com](mailto:leasing@teboproperties.com)

303-447-8326

[www.TEBOproperties.com](http://www.TEBOproperties.com)