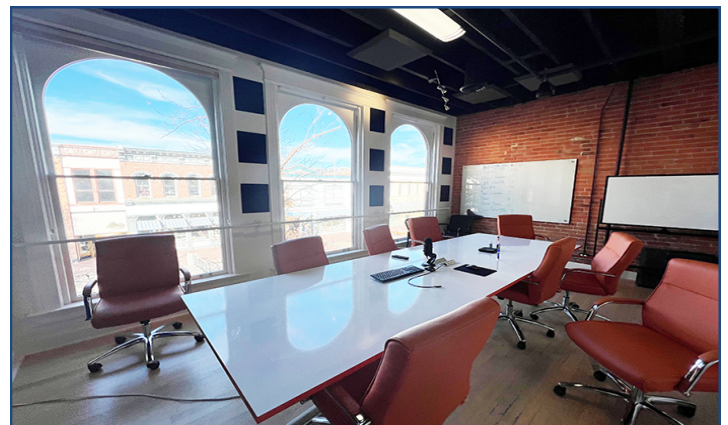


**1222 Pearl Street
Unit 200
Boulder, CO**

3,813 Square Feet

Office Space Available!

- Beautiful open floorplan
- Hardwood flooring and exposed red brick on east and west walls
- Beautiful tile entryway
- Rooftop deck w/ stunning Flatiron views
- Freight elevator access to space
- Kitchenette, full bathroom and shower in unit
- Handicap accessible
- Beautiful large rounded windows and skylight for ample natural light
- Overlooking Pearl Street Mall
- Waiting room/reception area
- Closed meeting/conference room
- Dedicated stair access



TEBO
PROPERTIES

Contact us for more information:

leasing@teboproperties.com

303-447-8326

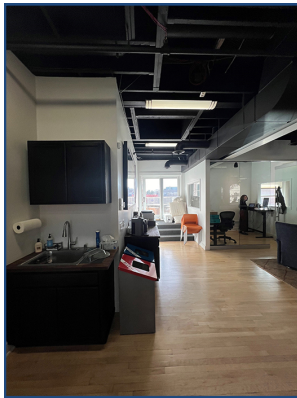
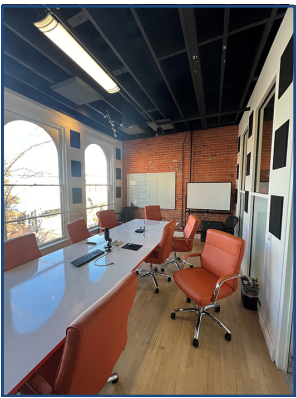
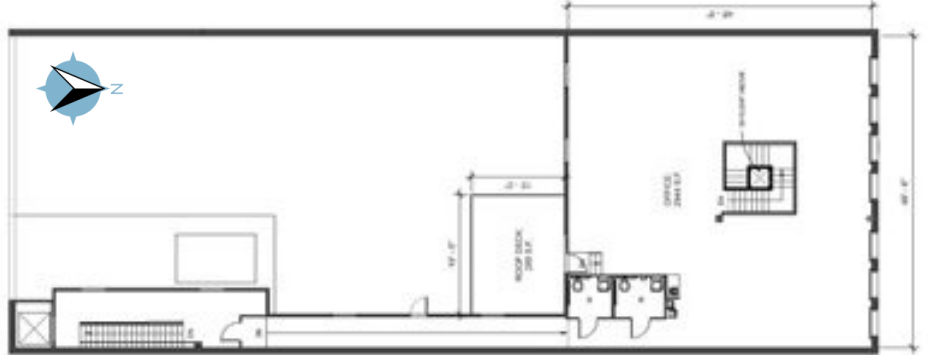
www.TEBOproperties.com

OFFICE SPACE FOR LEASE

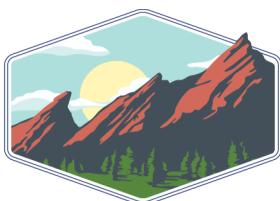
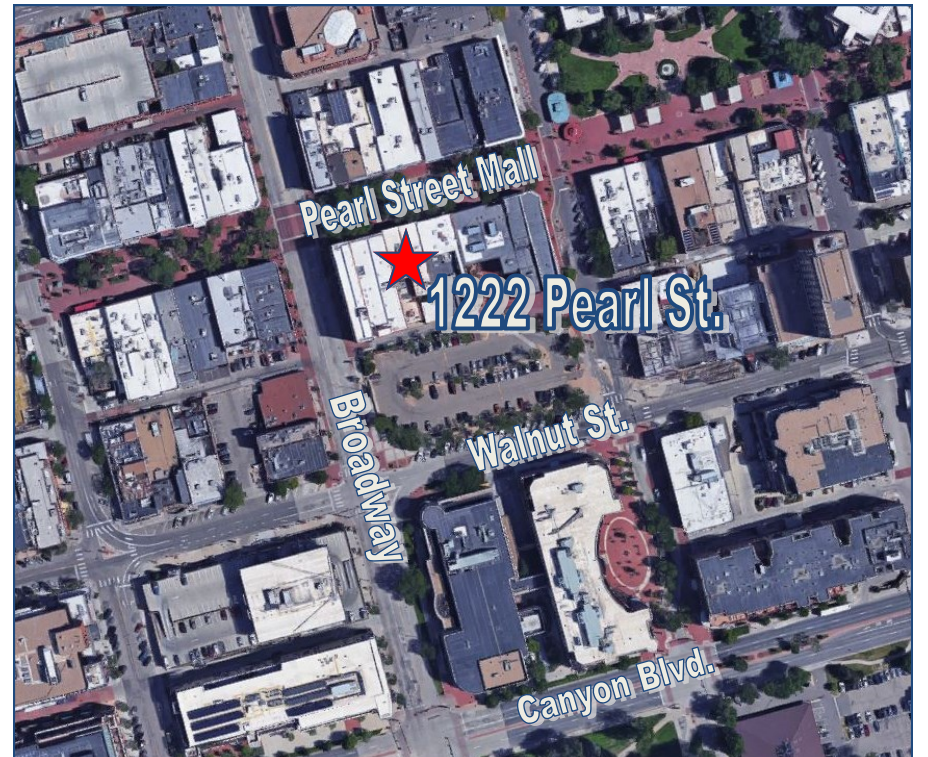


TEBO
PROPERTIES

1222 Pearl Street, Boulder, CO



Unit	Square Footage	Price
200 (Available 6/30/2024)	3,813	\$29.50/SF + \$15.05 (NNN) = \$14,155.76/Month



TEBO
PROPERTIES

Contact us for more information:
leasing@teboproperties.com
303-447-8326
www.TEBOproperties.com