

**1129 Pearl Street
Boulder, CO**

6,110 Square Feet

**RARE PEARL STREET MALL
RETAIL FOR LEASE**

Unbeatable Location:

Situated in the heart of the iconic Pearl Street Mall on the bricks

Flagship Retail Presence:

Formerly occupied by The North Face

Expansive Space:

Open flow with main entrance right off the Pearl Street Mall bricks

Exposed Brick:

Modern finishes, exposed brick and infrastructure upgrades

Seamless Indoor-Outdoor Flow:

Fully retractable storefront opens directly onto the mall

High Visibility & Branding Potential:

Prominent frontage with excellent signage opportunities

Rear Loading Access:

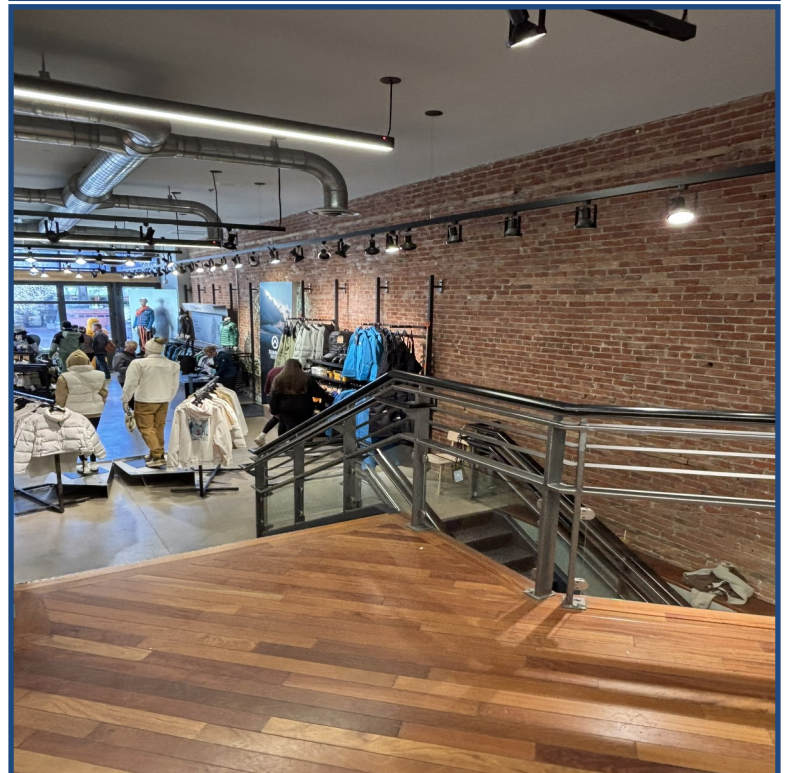
Convenient off-alley loading for discreet deliveries

Striking Entry:

Soaring ceilings create an inviting and spacious feel

Exceptional Foot Traffic:

Benefit from consistent year-round pedestrian volume



TEBO
PROPERTIES

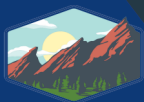
Contact us for more information:

leasing@teboproperties.com

303-447-8326

www.TEBOproperties.com

Pearl Street Mall Retail For Lease

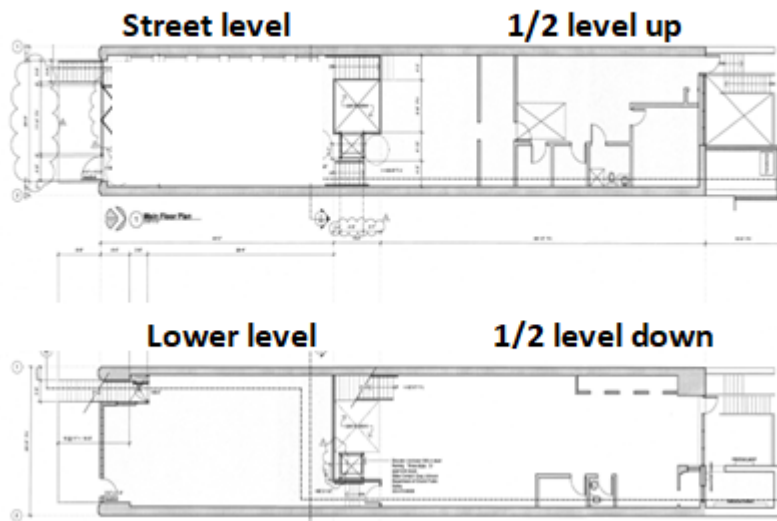


TEBO
PROPERTIES

1129 Pearl Street Boulder, CO

N →

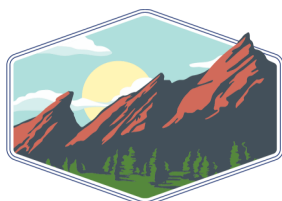
Pearl Street Mall



Alley



Square Footage	Price *NNN as of 12/31/24
6,110	\$42.50/SF + \$15.78 (NNN)*



TEBO
PROPERTIES

Contact us for more information:
leasing@teboproperties.com
 303-447-8326
www.TEBOproperties.com