

1075 East S. Boulder Road
Suites 210, 215, 220, 225,
& 300 Louisville, CO

992– 4,937
Square Feet

Office Spaces Available!

- Second and Third level office located off Hwy 42 and South Boulder Road
- Open floor plan
- Reception/Conference Room
- Amenities include in suite kitchen and restrooms
- Lots of natural light throughout suites
- Ample parking
- Full elevator access
- Minutes from Downtown Louisville, close to many local restaurants
- Easy access to Boulder, Denver and Longmont



TEBO
PROPERTIES

Contact us for more information:

leasing@teboproperties.com

303-447-8326

www.TEBOproperties.com

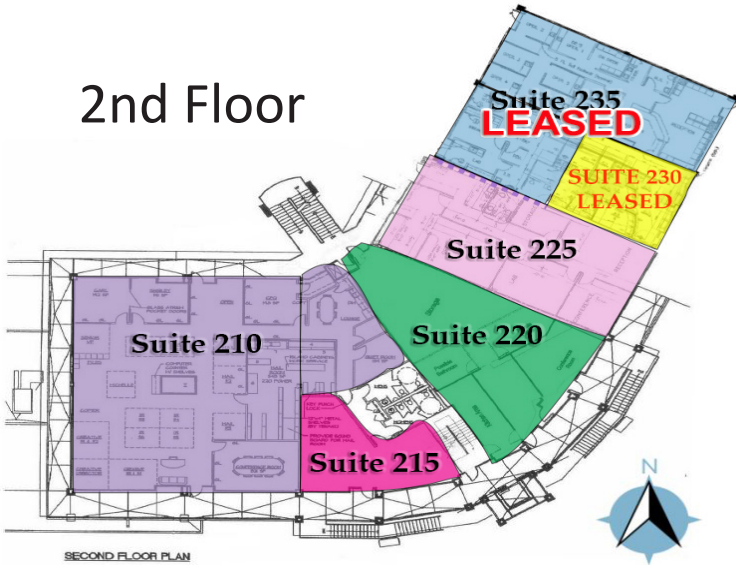
OFFICE SPACE FOR LEASE

1075 East S. Boulder Road, Louisville, CO



TEBO
PROPERTIES

2nd Floor



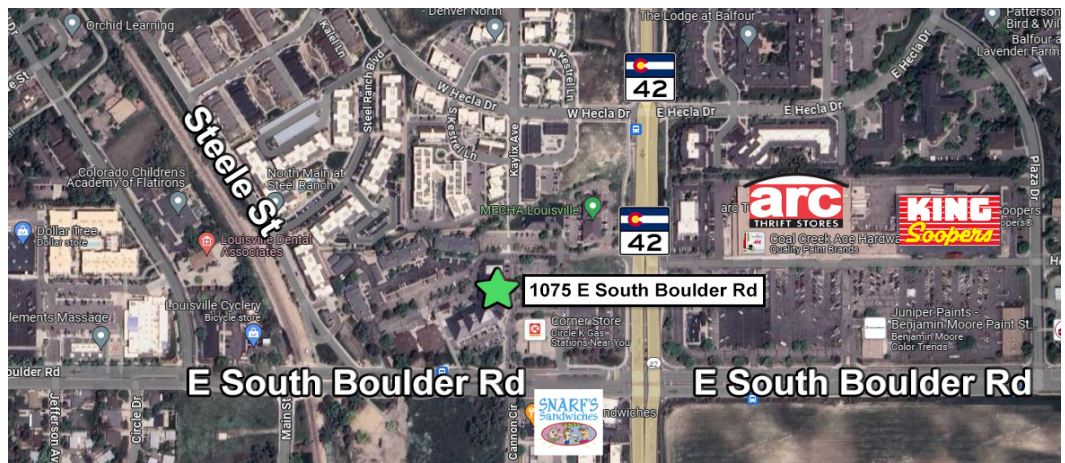
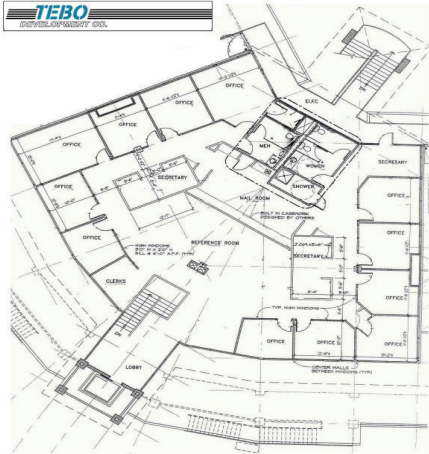
Unit	Square Footage	Price
210	4,395	\$14.00/SF + \$8.55 (NNN) = \$8,258.94/MO
215	992	\$14.00/SF + \$8.55 (NNN) = \$1,864.13/MO
220	1,965	\$14.00/SF + \$8.55 (NNN) = \$3,692.56/MO
225	1,790	\$14.00/SF + \$8.55 (NNN) = \$3,363.71/MO
300	4,937	\$14.00/SF + \$8.55 (NNN) = \$9,277.45/MO

Exhibit A

Christopher Plaza
1075 South Boulder Road
Louisville, Colorado



Penthouse
Suite 300



TEBO
PROPERTIES

Contact us for more information:
leasing@teboproperties.com
 303-447-8326
www.TEBOproperties.com