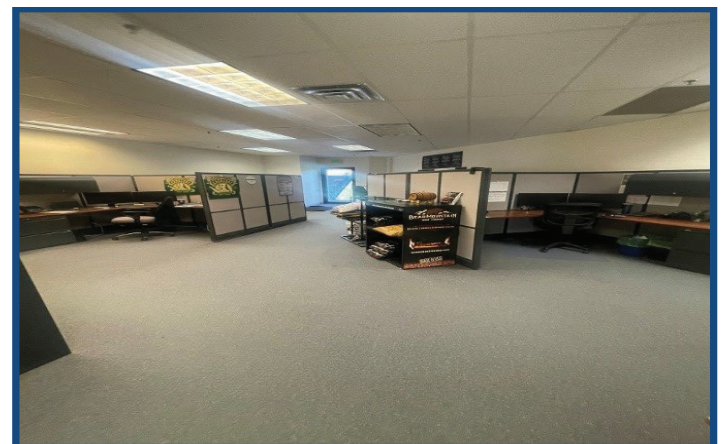
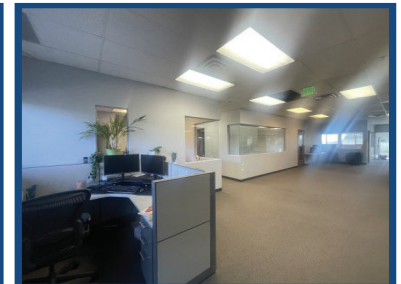


1075 East S. Boulder Rd  
Suites 210, 215, 220, 300  
Louisville, CO

992– 7,352  
Square Feet

## Office Spaces Available!

- **Prime Commercial Location:** Situated on a high-traffic corridor in Louisville, CO.
- **Versatile Space:** Ideal for office, or service-oriented businesses.
- **Ample Parking:** Convenient on-site parking for customers and employees.
- **Excellent Accessibility:** Easy access to Highway 36, Boulder, and surrounding communities.
- **Strong Visibility:** High daily traffic counts ensure maximum exposure.
- **Surrounded by Amenities:** Near shopping centers, restaurants, and residential neighborhoods.



**TEBO**  
PROPERTIES

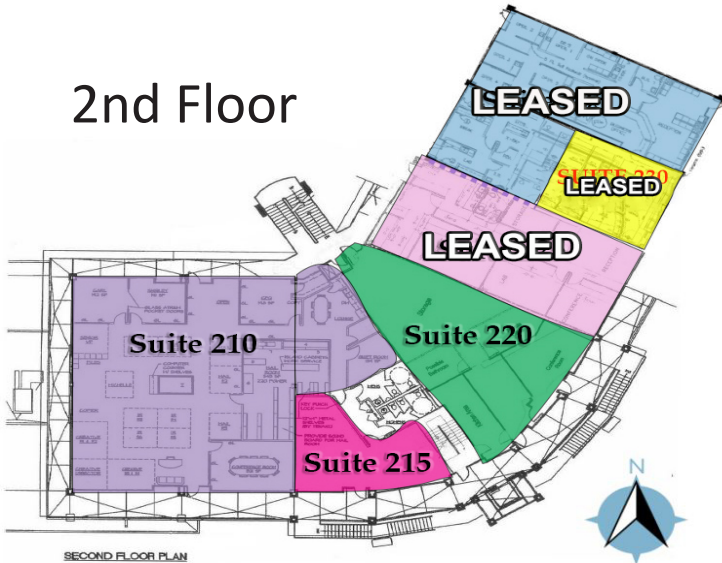
Contact us for more information:  
[leasing@teboproperties.com](mailto:leasing@teboproperties.com)  
303-447-8326  
[www.TEBOproperties.com](http://www.TEBOproperties.com)



**TEBO**  
PROPERTIES

1075 E. South Boulder Rd, Louisville, CO

## 2nd Floor



Unit	Square Footage	Price <i>*All NNN are as of 12/31/24</i>
210	4,395	\$14.00/SF + \$8.55 (NNN)* = \$8,258.94/MO
215	992	\$14.00/SF + \$8.55 (NNN)* = \$1,864.13/MO
220	1,965	\$14.00/SF + \$8.55 (NNN)* = \$3,692.56/MO
300	4,937	\$14.00/SF + \$8.55 (NNN)* = \$9,277.45/MO

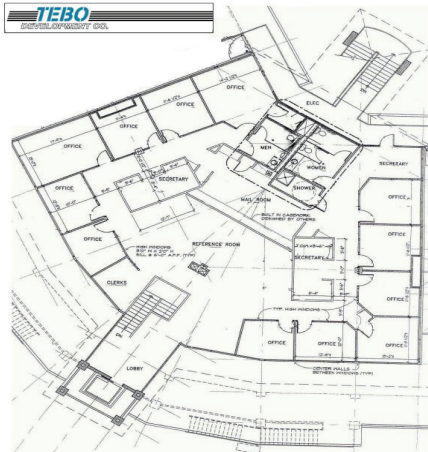
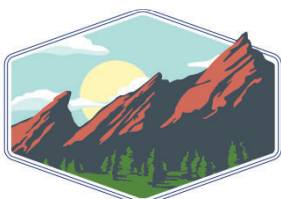
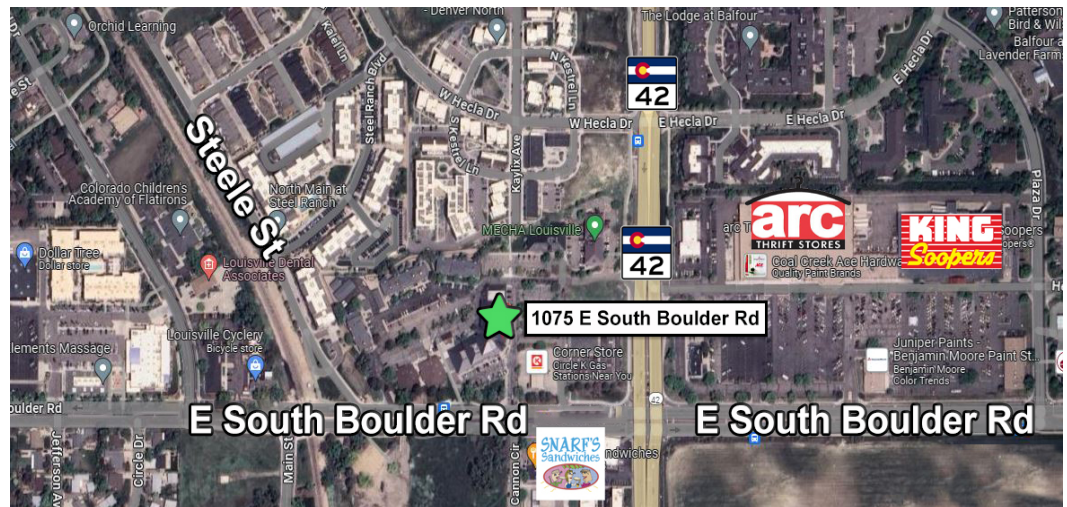


Exhibit A  
Christopher Plaza  
1075 South Boulder Road  
Louisville, Colorado



Penthouse Suite 300



**TEBO**  
PROPERTIES

Contact us for more information:  
[leasing@teboproperties.com](mailto:leasing@teboproperties.com)  
 303-447-8326  
[www.TEBOproperties.com](http://www.TEBOproperties.com)